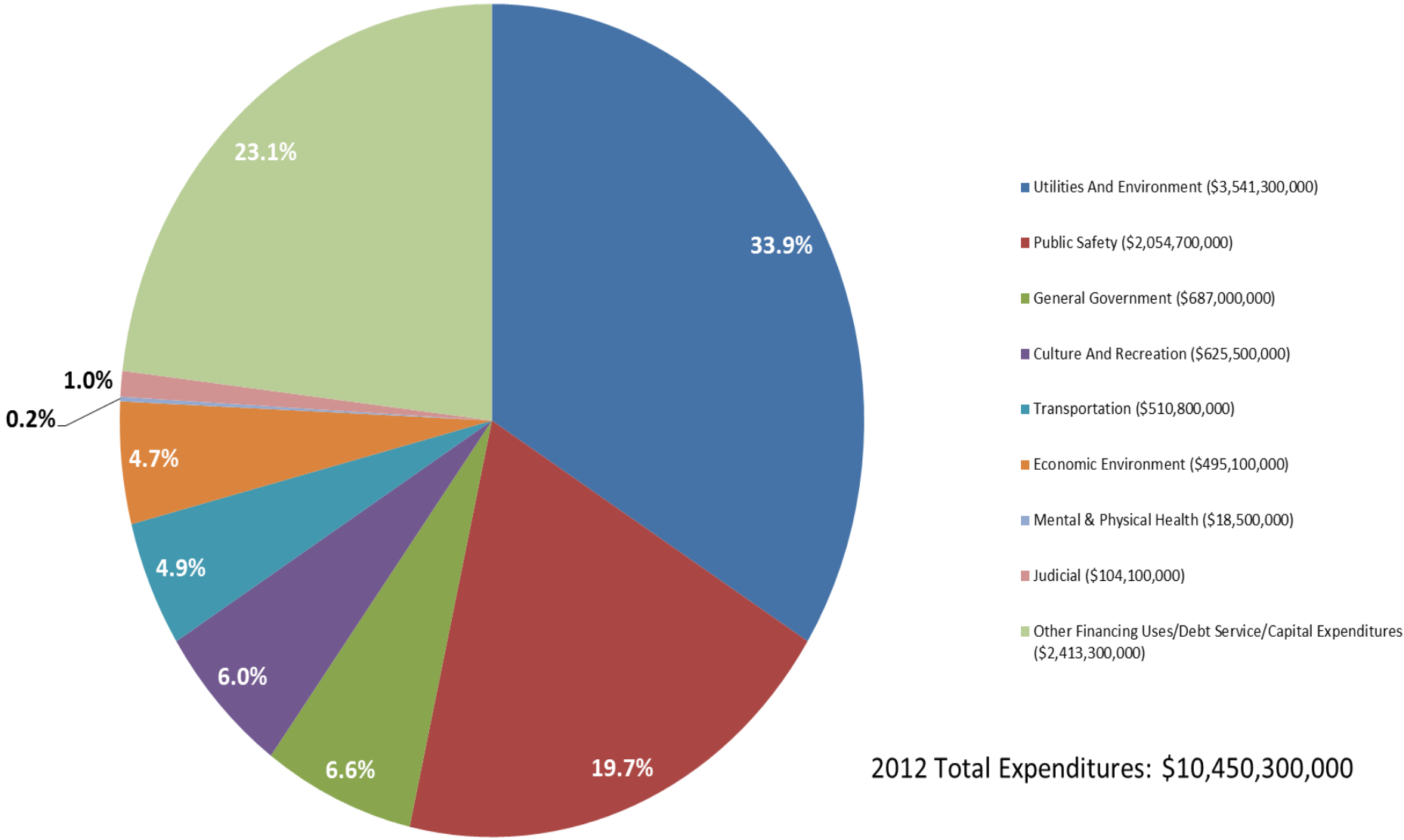


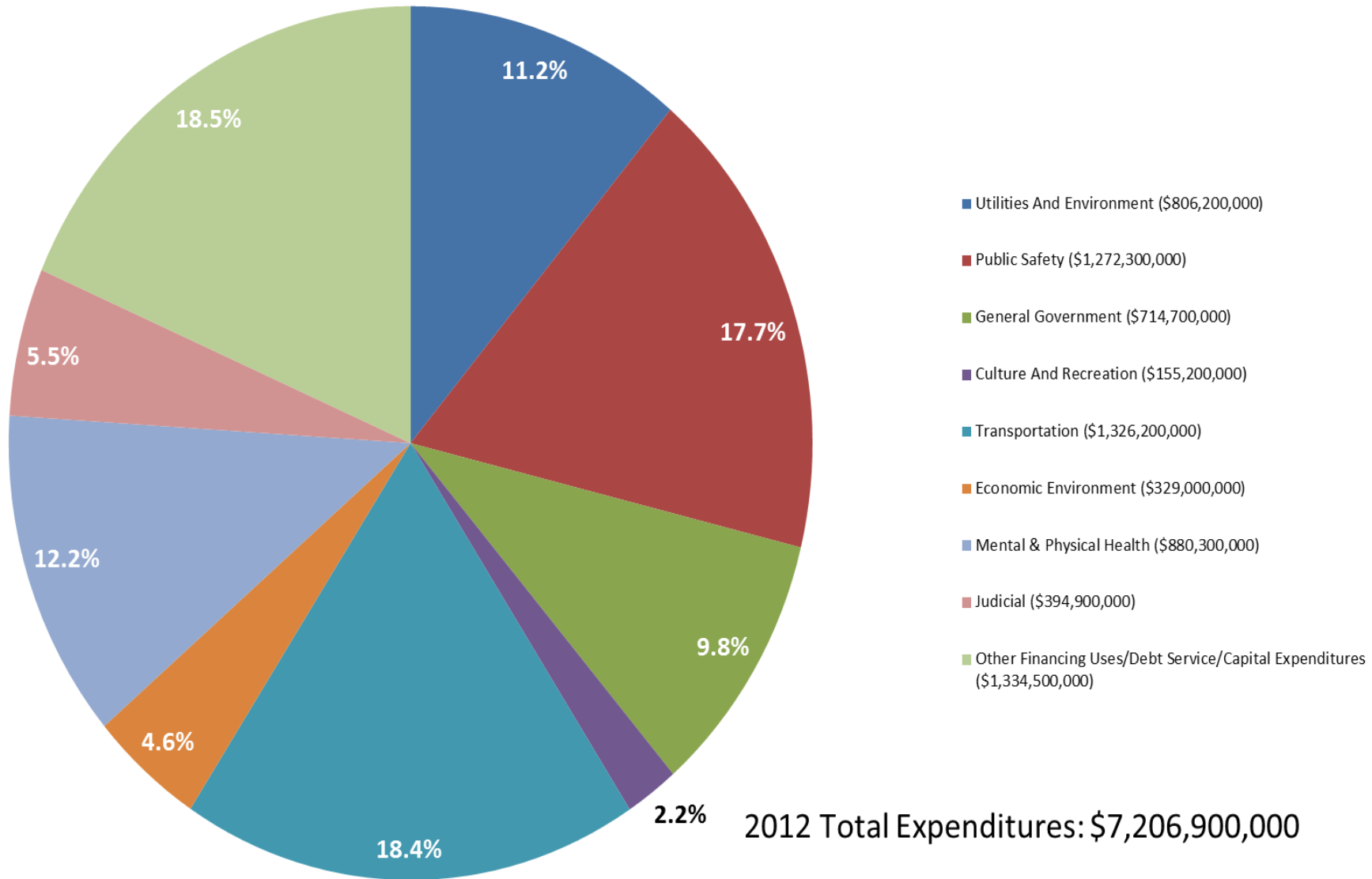
City and County Expenditures

2012 Total Expenditures, Cities

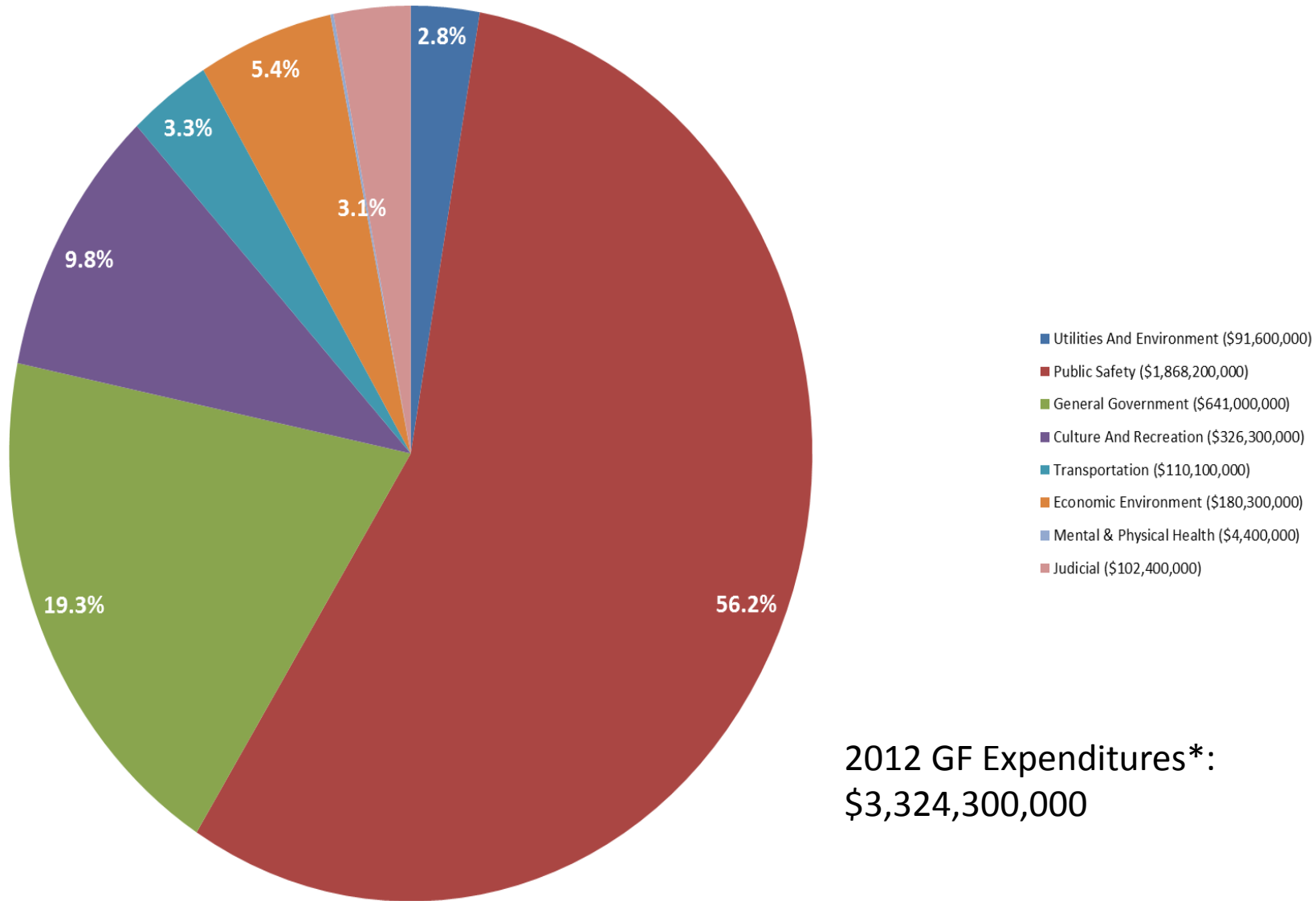


2012 Total Expenditures: \$10,450,300,000

2012 Total Expenditures, Counties



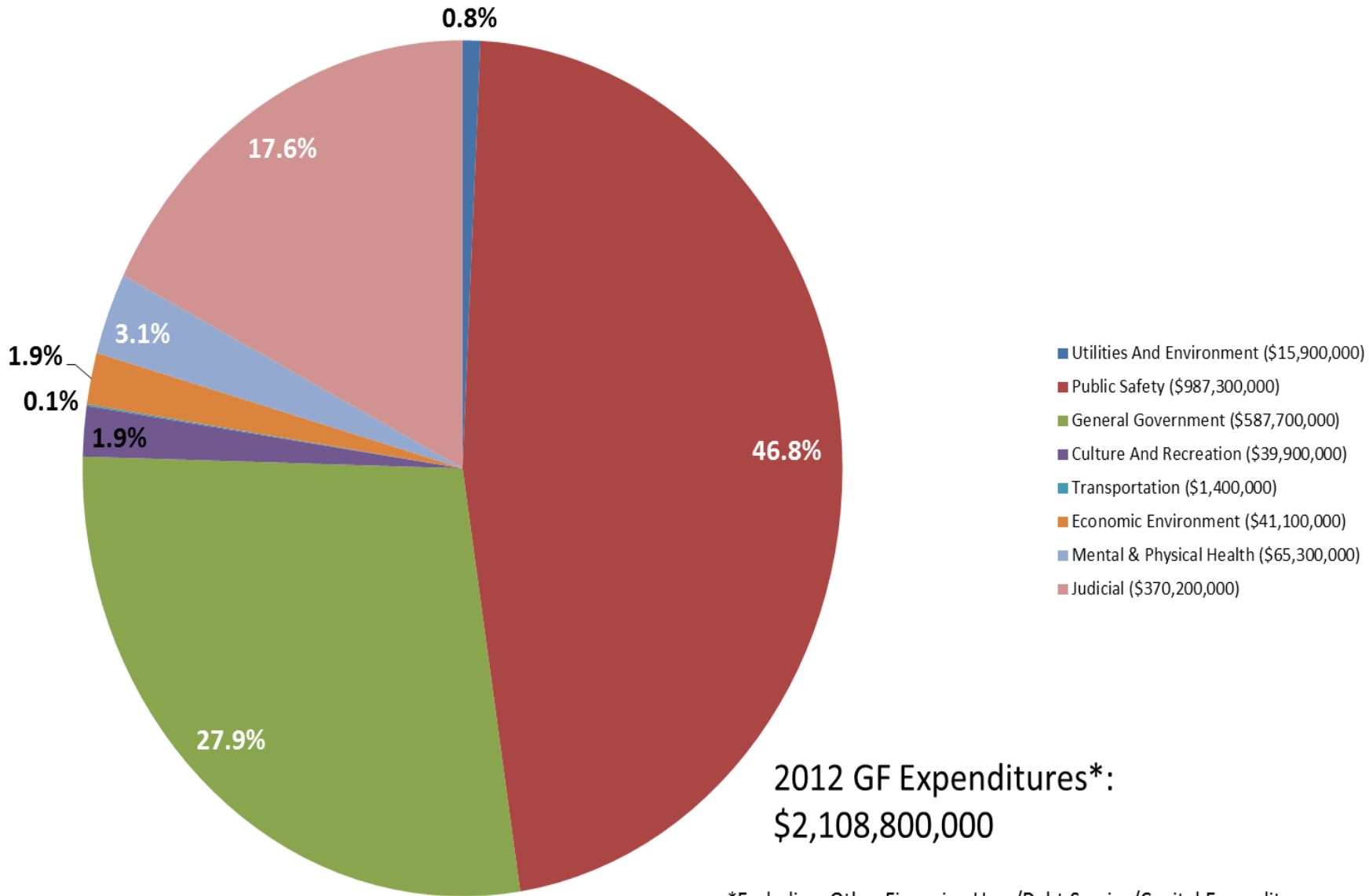
2012 General Fund Expenditures*, Cities



*Excluding Other Financing Uses/Debt Service/Capital Expenditures

Data: WA State Auditor Local Government Financial Reporting System

2012 General Fund Expenditures*, Counties



*Excluding Other Financing Uses/Debt Service/Capital Expenditures

Data: WA State Auditor Local Government Financial Reporting System

Top 3 General Fund Expenditures*, 2012 Cities

<i>Expenditure</i>	<i>Percent of total GF expenditures*</i>	<i>Total</i>
Law Enforcement	32%	\$1,077,700,000
General Government	19%	\$641,000,000
Fire Control	16%	\$537,900,000

Counties

<i>Expenditure</i>	<i>Percent of total GF expenditures*</i>	<i>Total</i>
Law Enforcement	22%	\$457,700,000
Detention & Correction	18%	\$383,600,000
Judicial	18%	\$370,200,000

*Excluding Other Financing Uses/Debt Service/Capital Expenditures

Top 3 General Fund Expenditures*, 2012

Cities

<i>Expenditure</i>	<i>Total</i>	<i>Personnel expenditures**</i>	<i>Personnel expenditures as a percentage of total</i>
Law Enforcement	\$1,077,700,000	\$802,100,000	74%
General Government	\$641,000,000	\$343,900,000	54%
Fire Control	\$537,900,000	\$400,900,000	75%

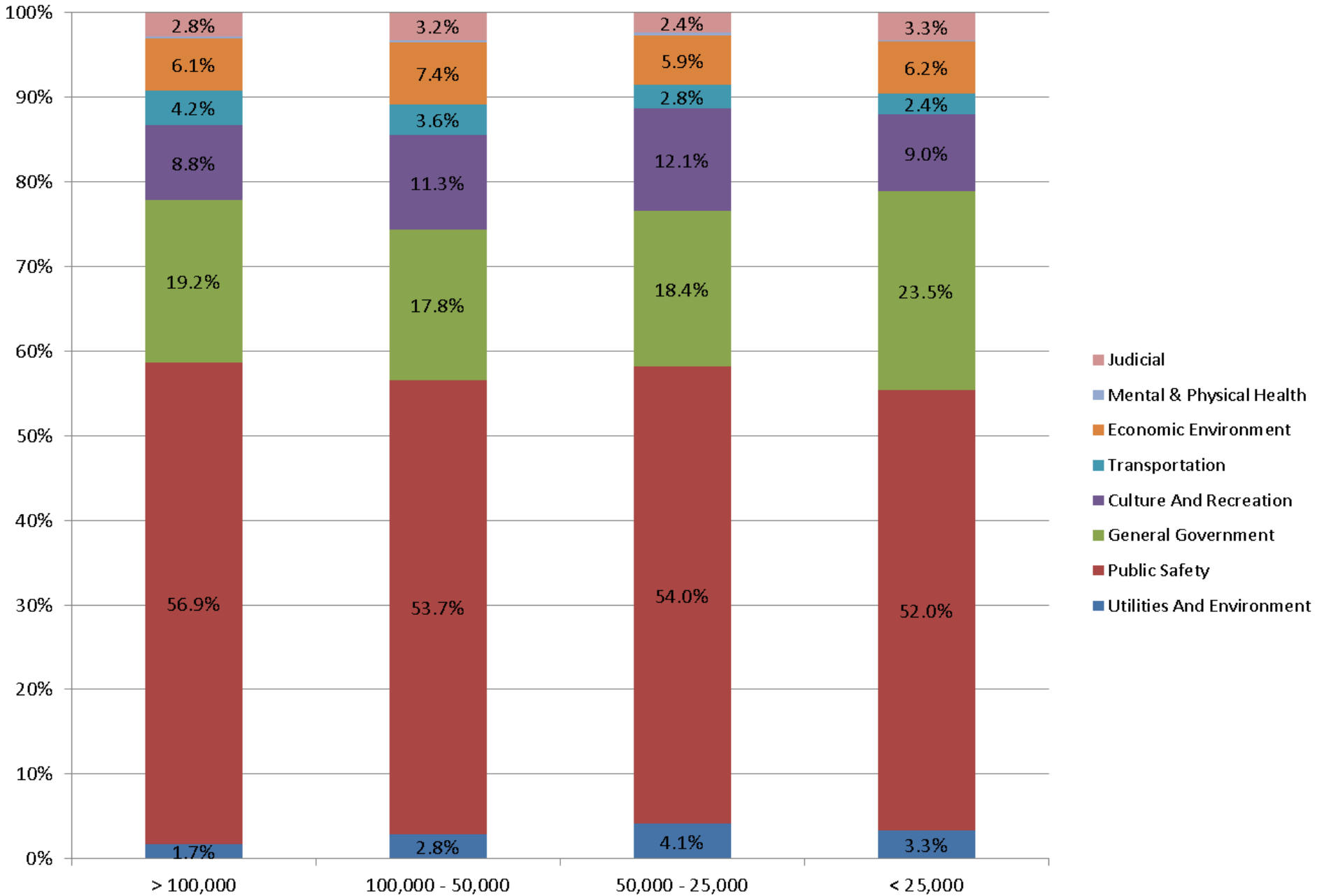
Counties

<i>Expenditure</i>	<i>Total</i>	<i>Personnel expenditures**</i>	<i>Personnel expenditures as a percentage of total</i>
Law Enforcement	\$457,700,000	\$371,000,000	81%
Detention & Correction	\$383,600,000	\$272,600,000	71%
Judicial	\$370,200,000	\$231,400,000	63%

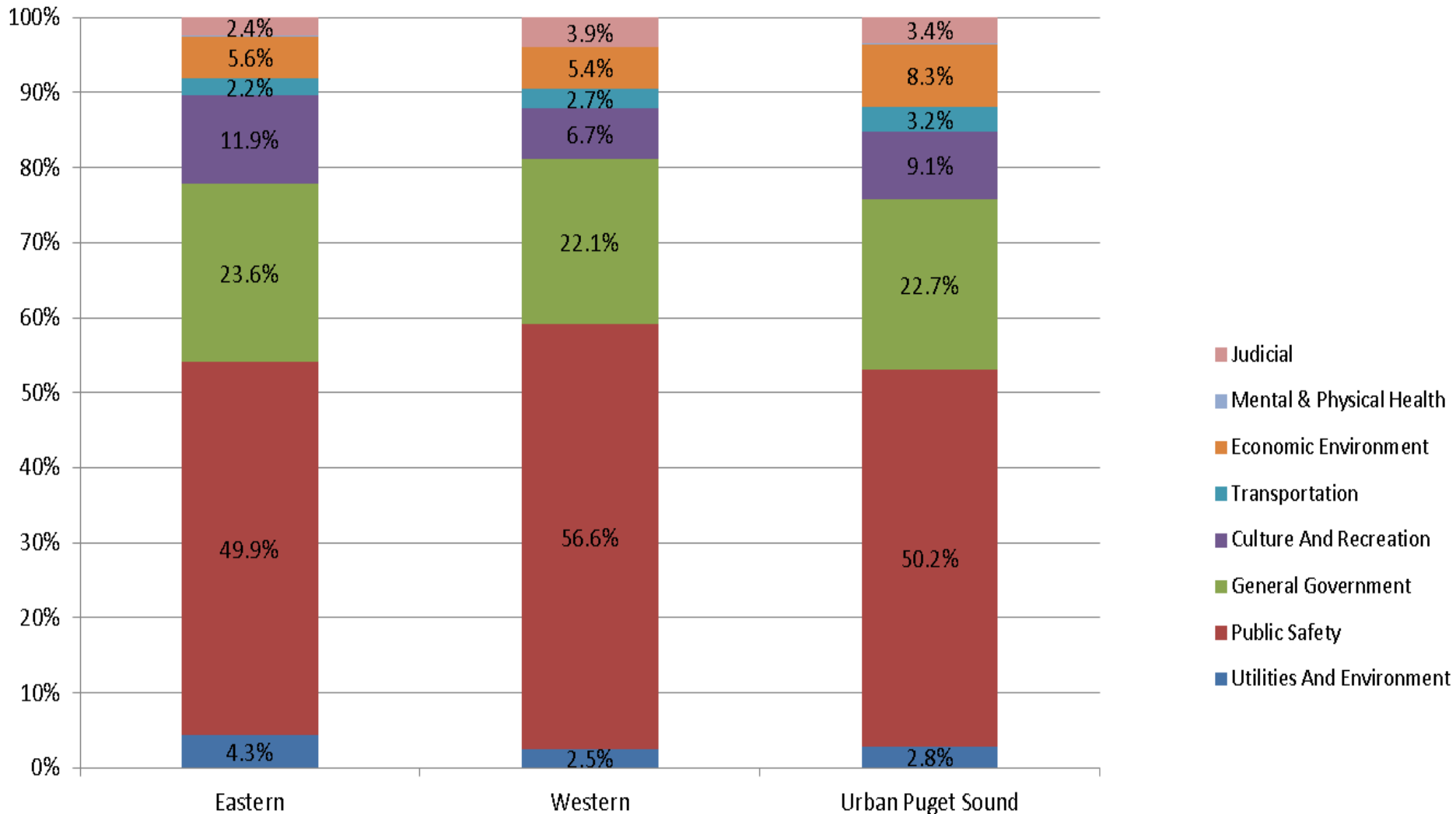
*Excluding Other Financing Uses/Debt Service/Capital Expenditures

**Personnel expenditures: Salaries, wages & personnel benefits

2012 General Fund Expenditures, Cities, by population



2012 General Fund Expenditures, Cities, by geographic region

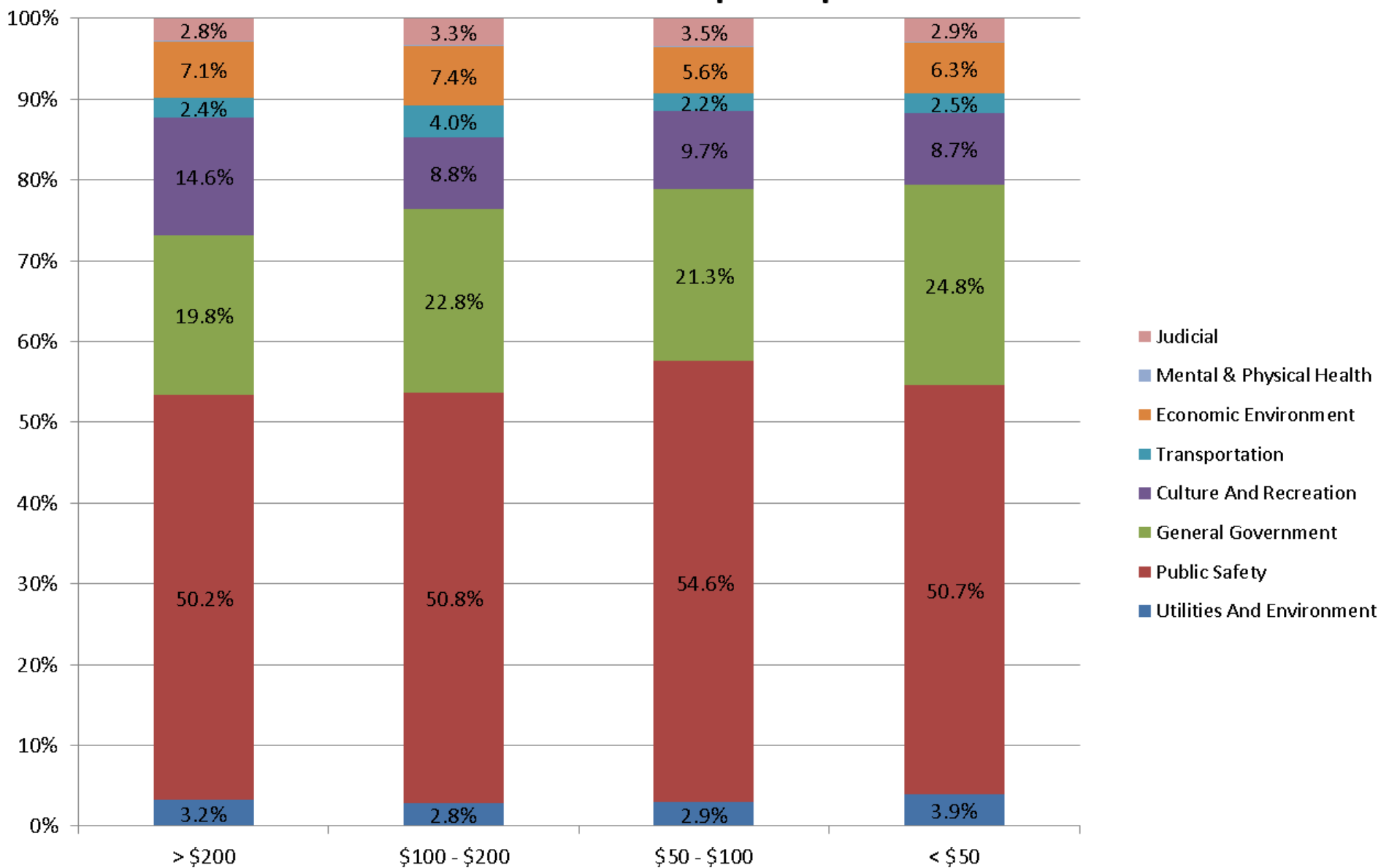


East: Okanogan, Ferry, Stevens, Pend Oreille, Chelan, Douglas, Lincoln, Spokane, Kittitas, Grant, Adams, Whitman, Yakima, Benton, Franklin, Klickitat, Walla Walla, Columbia, Garfield, Asotin

West: Mason, Whatcom, Skagit, San Juan, Snohomish, Island, Kitsap, Clallam, Jefferson, Grays Harbor, Pacific, Lewis, Wahkiakum, Cowlitz, Clark, Skamania

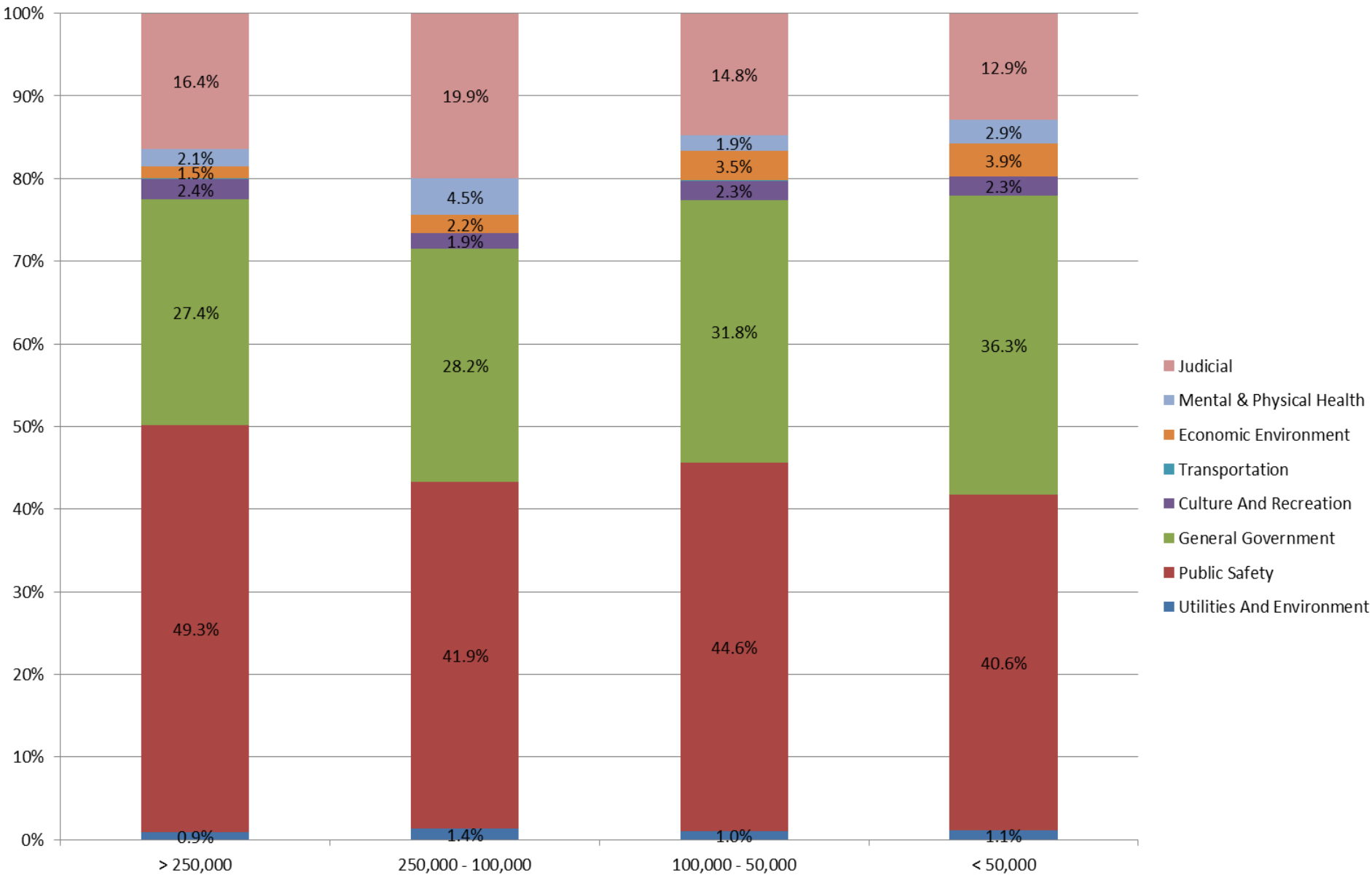
Metro Puget Sound: Thurston, Pierce, King

2012 General Fund Expenditures, Cities, by local sales and use tax revenue per capita

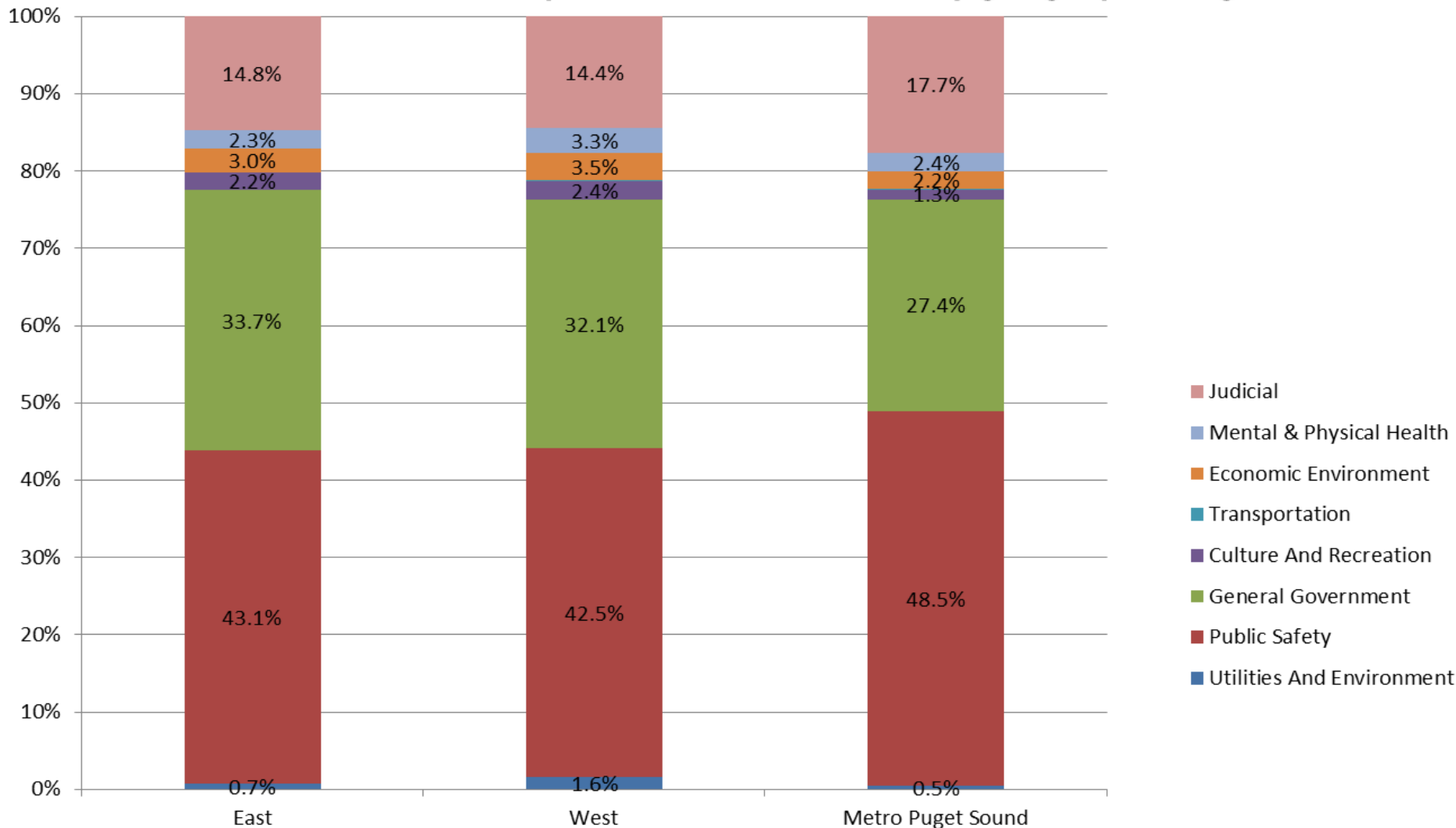


Data: WA State Auditor Local Government Financial Reporting System, OFM population data & Department of Revenue

2012 General Fund Expenditures, Counties, by population



2012 General Fund Expenditures, Counties, by geographic region



East: Okanogan, Ferry, Stevens, Pend Oreille, Chelan, Douglas, Lincoln, Spokane, Kittitas, Grant, Adams, Whitman, Yakima, Benton, Franklin, Klickitat, Walla Walla, Columbia, Garfield, Asotin

West: Mason, Whatcom, Skagit, San Juan, Snohomish, Island, Kitsap, Clallam, Jefferson, Grays Harbor, Pacific, Lewis, Wahkiakum, Cowlitz, Clark, Skamania

Metro Puget Sound: Thurston, Pierce, King

2012 General Fund Expenditures, Counties, by local sales and use tax revenue per capita

